



ADMISSIONS POLICY

Approved at Board Meeting

13 September 2022

Review Date: September 2027

Internal and external circulation

Admissions Policy

Li Po Chun United World College of Hong Kong (LPCUWC) is one of the 18 United World Colleges (UWC) across the world that offers a unique two-year pre-university education for students aged between 16-19 years old. Our students are selected across the world and more than 90 countries are represented in our student body.

In these final two years of secondary school, the academic curriculum is the International Baccalaureate Diploma Programme (IBDP). At most UWC schools and colleges, students in the IBDP years are boarding students, learning and living on campus in a diverse UWC community.

UWC Mission

UWC makes education a force to unite people, nations and cultures for peace and a sustainable future.

UWC Values

Driven by our mission and these nine values, our movement inspires and empowers young people while transcending the diversities of socio-economic background, culture, race, religion, nationality, and beyond.

- International and intercultural understanding
- Celebration of difference
- Personal responsibility and integrity
- Mutual responsibility and respect
- Compassion and service
- Respect for the environment
- A sense of idealism
- Personal challenge
- Action and personal example

Quality education regardless of financial status

At all UWC schools and colleges, it is our basic philosophy to select students purely on merit and their financial background is not a hindrance for them to be selected. Therefore, the UWC Scholarship Scheme provides scholarships to selected students according to their financial need on a means-tested basis. A range of scholarships amounts are given according to need up to a full scholarship. A full scholarship to attend a UWC covers tuition, textbooks and accommodation fees. We outline the guiding process of our financial need assessment [here](#).

LPCUWC ADMISSIONS

LPCUWC celebrates diversity by consistently selecting students with a distinct commitment to the UWC mission and values.

There are two ways to gain admission to Li Po Chun United World College.

1. UWC National Committees (for both scholarship applicants and fee payers)

Most students in the IBDP years at UWC are selected through one of UWC's national committees. Representing UWC in over 159 countries and territories, UWC national committees form a global network which seeks and selects students with great potential from around the world, often in the most unlikely places.

If you require a grant or scholarship, you should apply using this application process. Applicants who do not require a grant or scholarship can also apply through National Committee. Over 65% of students selected through the UWC national committee system are offered financial assistance. Scholarships are granted on the basis of each individual's needs and means.

The application process is guided by the individual national committee. The application process in Hong Kong is guided by **UWC Hong Kong Committee** in partnership with Li Po Chun United World College of Hong Kong.

If you are...

- a) currently residing in Hong Kong; and/or
 - b) have a Hong Kong Permanent ID Card or dependent visa
- you would be eligible to apply through the UWC Hong Kong Committee.

2. UWC Global Selection Programme (for fee payers only)

The UWC Global Selection Programme (GSP) is an application route for the International Baccalaureate Diploma Programme (IBDP) for a limited number of places with no financial assistance. Currently, you can apply to Li Po Chun UWC via this route.

Please note that applicants who choose the GSP route forgo financial assistance. You can find information about our school fees [here](#). If you need a scholarship to attend UWC, please refer to the [UWC national committee entry-route](#).

If you are...

- a) interested in applying to LPCUWC as one of your UWC options; and/or
 - b) do not have a Hong Kong Permanent ID Card or dependent visa
- you would be eligible to apply through the UWC Global Selection Programme.

Admissions Process

1. Application Review

Applicants apply through a detailed application form, answering 10 questions in writing as well as in video form. They are also required to supplement a recommendation letter from a teacher that knows them well, their academic reports in the past two years and a parent recommendation letter for the student. Students' recommendations are read by the Admissions Director as well as one alumni from the United World Colleges. We consider the applicant form holistically by reviewing all of the supplied documents, we pay particular attention to their academic achievements as the IBDP curriculum is intellectually rigorous and challenging.

2. Challenge Day

Applicants who passed the first round of application review are invited to the Challenge Day, a full day of activities and assessments led by the Admissions Director with alumni. Applicants are assessed throughout the day by 2 alumni assessors accompanying them in various activities, and by 1 alumni interviewer during a short 1:1 interview. Applicants are selected according to the UWC Core Selection Criteria (Figure 1) founded upon five aspects, including i) intellectual curiosity and motivation, ii) active commitment, iii) social competence, iv) resilience, personal responsibility and integrity and v) motivation for UWC.

UWCHK SELECTION CRITERIA

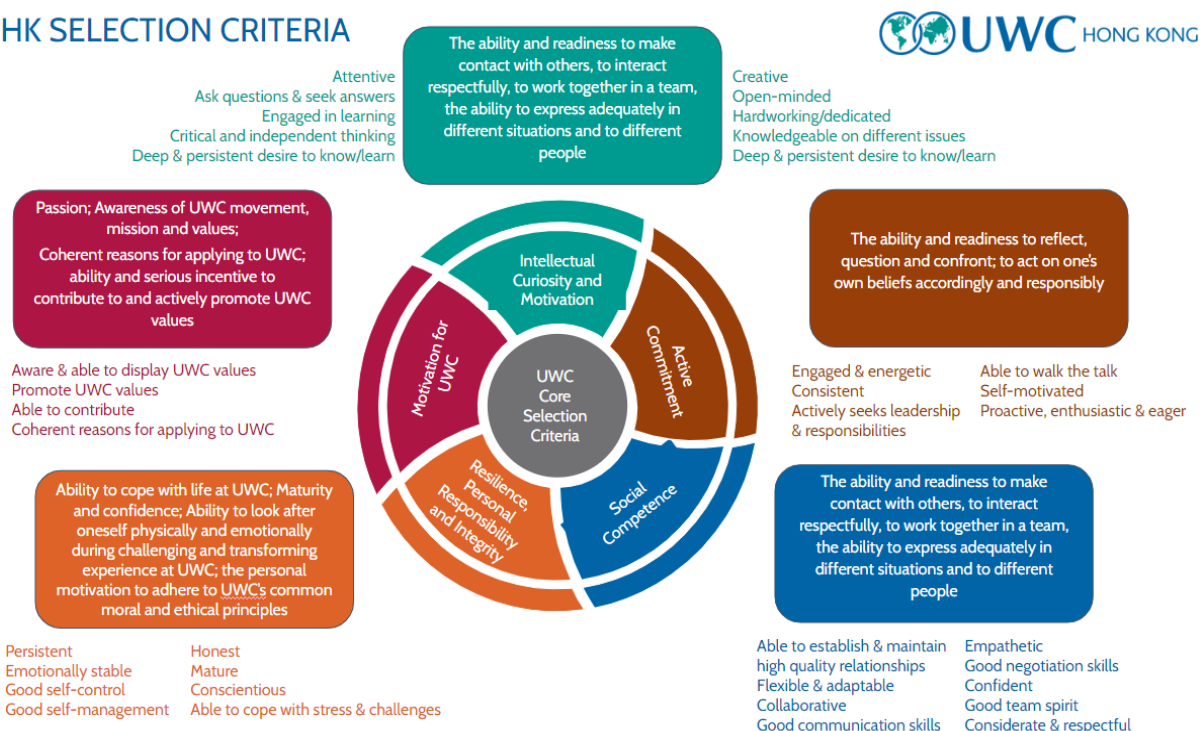


Figure 1: UWC Core Selection Criteria and Key Corresponding Attributes

Alumni assessors and interviewers assess applicants on a scale of “Highly recommend”, “Recommend”, “Recommend with reservation” and “Do not recommend”. After collating the assessment of each applicant, we categorise them into different tiers (Figure 2).

Interviewers/Assessors	Highly recommend	Recommend	Recommend with reservation	Do not recommend
Highly recommend	Tier 1	Tier 2	Tier 3	Tier 4
Recommend	Tier 2	Tier 3	Tier 4	Tier 5
Recommend with reservation	Tier 3	Tier 4	Tier 5	Tier 6
Do not recommend	Tier 4	Tier 5	Tier 6	Tier 7

Figure 2: Applicants’ Tier System After Challenge Day

Alumni assessors and interviewers assess applicants on a scale of “Highly recommend”, “Recommend”, “Recommend with reservation” and “Do not recommend”. After collating the assessment of each applicant, we categorise them into different tiers (Figure 2).

3. Final Panel Interview

The final panel interview includes LPCUWC’s Principal, a Board member from UWCHK, as well as an external, independent interviewer. There are five main criteria during the panel interview, including i) resilience and self-motivation, ii) ability to conduct deep reflections and communicate effectively, iii) commitment to UWC ideals & potential to grow from UWC experience, iv) skills to contribute something unique and passion to represent homeland and v) ethics, honesty and integrity and commitment to serve others before self. Interviewers score each section out of 10, and those scored between 5-14 are categorised as “do not recommend”, 15-17 as “recommend with reservation”, 28-40 as “recommend” and 41-50 as “highly recommended”. Applicants are then ranked according to their scores.